

 **INDOFINE Chemical Company, Inc.**

121 Stryker Lane, Bldg. 30, Suite 1 • Hillsborough, NJ 08844 • U.S.A.

Phone: (908) 359-6778 • FAX: (908) 359-1179

website: www.indofinechemical.com

e-mail: chemical@indofinechemical.com

CERTIFICATE OF ANALYSIS

Catalog Number: 22-224

Product Name: **6,3',4'-TRIMETHOXYFLAVANONE**

Lot Number: 99078

Chemical Formula: C₁₈H₁₈O₅

Molecular Weight: 314.34

Melting Point: 175-178°C

Appearance: White powder

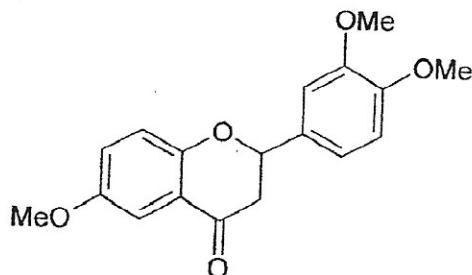
Solubility: Soluble in Chloroform

TLC: Hexane:Ethyl acetate (7:3)

NMR Spectrum: Enclosed (Conforms to the structure)

Storage: Store in a cool, dry place

Purity (HPLC): 99.83%





INDOFINE Chemical Company, Inc.

121 Stryker Lane, Bldg. 30, Suite 1 • Hillsborough, NJ 08844 • U.S.A.

Phone: (908) 359-6778 • FAX: (908) 359-1179

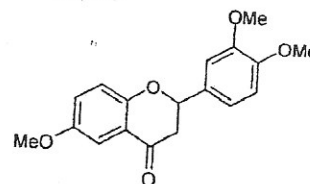
website: www.indofinechemical.com

e-mail: chemical@indofinechemical.com

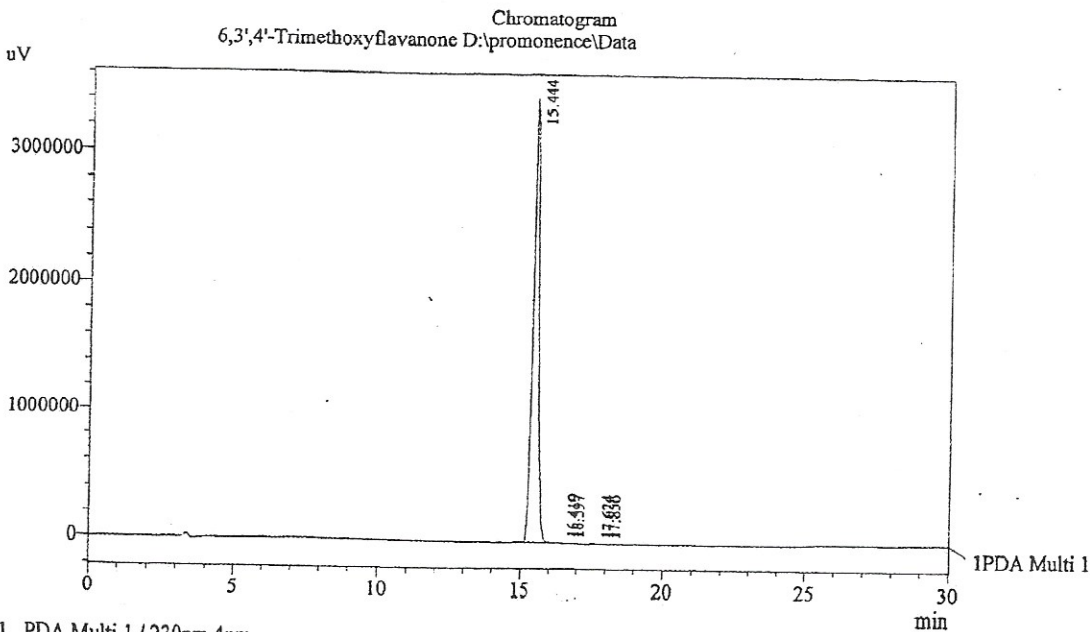
HPLC ANALYSIS

Acquired by : Sanjeev
Sample Name : 6,3',4'-Trimethoxyflavanone
Sample ID : Lot No: 99078
Injection Volume : 20 uL
Data Filename : 300813B.lcd
Method Filename : Linear Gradient.M.lcm

Catalog No.: 22-224
Product Name: 6,3',4'-Trimethoxyflavanone
Lot No.: 99078



Column : LUNA C-1J(2), (250mm x4.6mm 5.0µ)
Flow : 1.000 mL/min.
Mobile Phase : A(0.1% OPA in water) B(Acetonitrile)
0.01 90 10
12.0 10 90
20.0 10 90
23.0 90 10
30.0 90 10
Diluent : Acetonitrile



1 PDA Multi 1 / 230nm 4nm

PeakTable

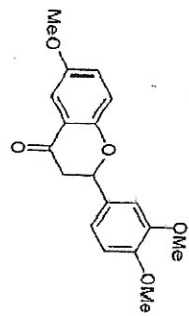
PDA Ch1 230nm 4nm

Peak#	Name	Ret. Time	Area	Area %	Relative Retention Time
1	6,3',4'-Trimethoxyflavanone	15.444	47588451	99.83	1.00
2	RT:16.419	16.419	19481	0.04	1.06
3	RT:16.597	16.597	11983	0.03	1.07
4	RT:17.624	17.624	43259	0.09	1.14
5	RT:17.856	17.856	5127	0.01	1.16
Total			47668301	100.00	



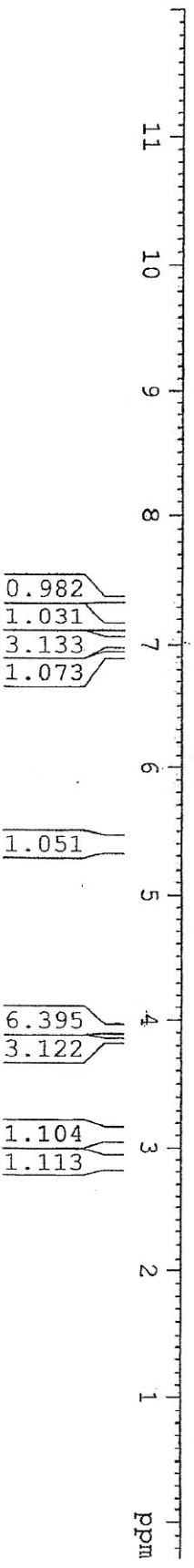
INDOFINE Chemical Company, Inc.
121 STRYKER LANE
BLDG. 30, SUITE 1
HILLSBOROUGH, NJ 08844

Catalog No.: 22-224
Product Name: 6,3',4'-Trimethoxyflavanone
Lot No.: 99078



SOLVENT CDCl3
NS 16
DS 0
SRH 10775.862 Hz
FIDRES 0.359219 Hz
AQ 1.3919572 sec
RG 20.2
DW 46.400 usec
DE 6.00 usec
TE 298.2 K
D1 1.50000000 sec
TD0 1

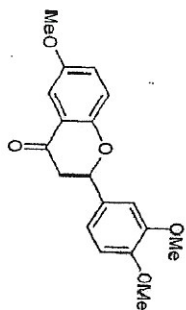
CHANNEL F1
NUC1 1H
P1 7.50 usec
PL1 2.60 dB
PL1W 6.62584448 W
SF01 600.3348457 MHz
SI 32768
SF 600.3300103 MHz
MDW EM
SSB 0
LB 0.30 Hz
GB 0
PC 1.00





INDOFINE Chemical Company, Inc.
121 STRYKER LANE
BLDG. 30, SUITE 1
HILLSBOROUGH, NJ 08844

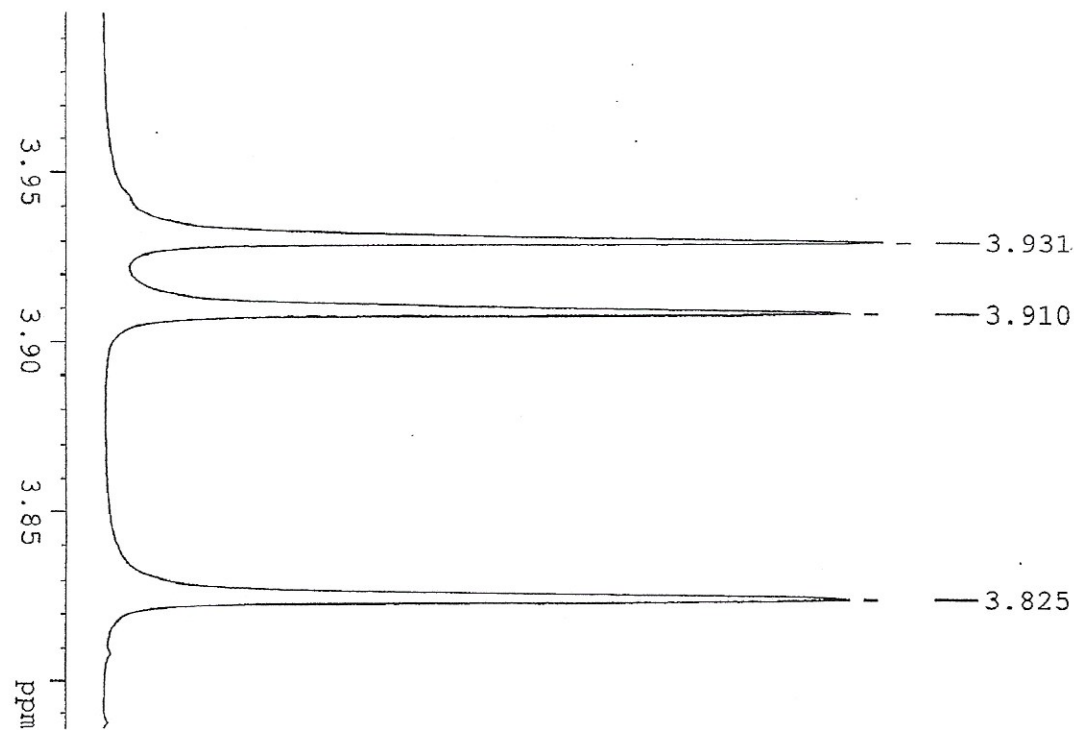
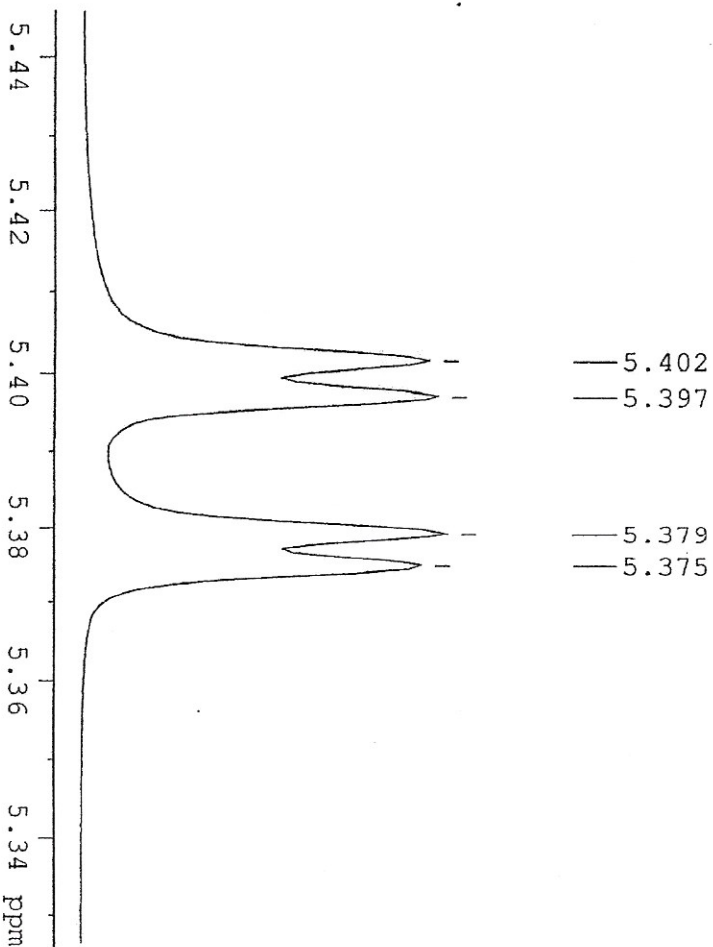
Catalog No.: 22-224
Product Name: 6,3',4'-Trimethoxyflavanone
Lot No.: 99078



SOLVENT CDCl3
NS 16
DS 0
SMH 10775.862 Hz
FIDRES 0.359219 Hz
AQ 1.3919572 sec
RG 20.2
DW 46.400 usec
DE 6.00 usec
TE 298.2 K
D1 1.50000000 sec
TD0 1

1H IN CDCl3
AVANCE-600

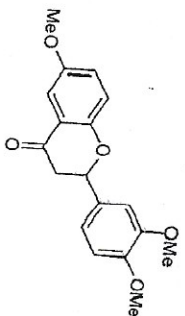
===== CHANNEL F1 =====
NUC1 1H
P1 7.50 usec
PL1 2.60 dB
PL1W 6.62584448 W
SFO1 600.3348457 MHz
SI 32768
SF 600.3300103 MHz
WDW EM
SSB 0
LB 0.30 Hz
GB 0
PC 1.00





INDOFINE Chemical Company, Inc.
 121 STRYKER LANE
 BLDG. 30, SUITE 1
 HILLSBOROUGH, NJ 08844

Catalog No.: 22-224
 Product Name: 6,3',4'-Trimethoxyflavanone
 Lot No.: 99078



SOLVENT CDCl₃
 NS 16
 DS 0
 SMH 10775.862 Hz
 FIDRES 0.359219 Hz
 RG 1.3919572 sec
 AO 20.2
 DW 46.400 usec
 DE 6.00 usec
 TE 298.2 K
 DI 1.50000000 sec
 TD0 1

CHANNEL F1
 NUCl 1H
 P1 7.50 usec
 P1L 2.60 dB
 P1LW 6.62584448 W
 SFO1 600.334857 MHz
 SI 32768
 SF 600.3300103 MHz
 MDM EM
 SSB 0
 LB 0.30 Hz
 GB 0
 PC 1.00

1H IN CDCl₃
 AVANCE-600

